



STYLE
+PLUS

15 Nishikyōgoku Azekatsuchō, Ukyo Ward,
Kyoto, 615-0806, Japan
More details on our website.



STYLE+PLUS



Online shop



Instagram



SHU-KEN

URUSHI
WALL

STYLE
+PLUS



STYLE+PLUS is a Kyoto-born brand for interior design that integrates materials with tradition, technologies, and people. With the concept of “adding extra colour to the space and life”, safe and high-quality products made from natural resources are delivered. The selections shown are interior designs that have applied urushi-nuri (lacquer coating/painting) which symbolises the beauty of Japan. Modern urushi-nuri are being introduced to enjoy the fusion with new material by collaborating Makino Urushi Kogei (Makino Lacquer Crafts Co., Ltd.) that has been contributing to the restoration of Kinkaku-ji Temple for decades.

STYLE
+PLUS

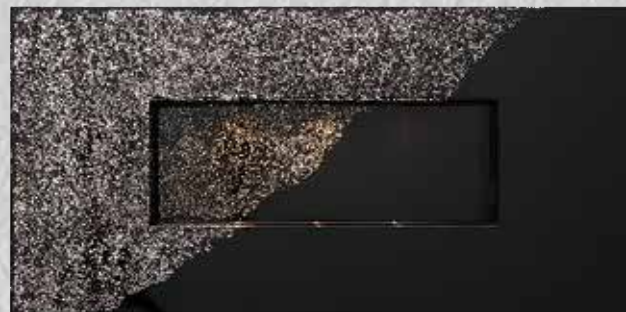
URUSHI WALL



The monochrome expresses the world of light and darkness.
The glowing black which can only be achieved by
urushi (lacquer) means
URUSHI WALL acts as a centrepiece to the room.

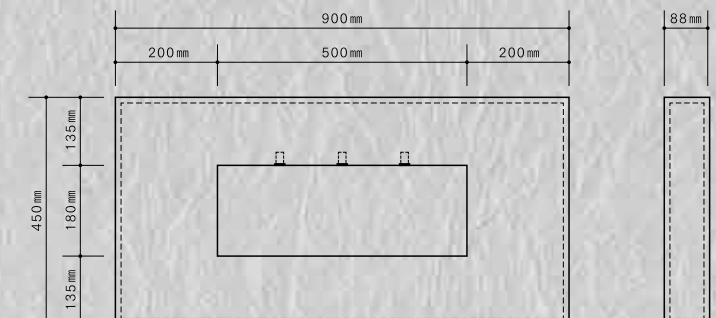


JPY528,000 (reference price including tax)



URUSHI WALL decorates the space
in the same way paintings are hung
on the wall. The glowing, deep
black produced by natural urushi-
nuri can only be described as jet
black. Makino Urushi Kogei (Makino
Lacquer Crafts Co., Ltd.), one of
the best urushi-nuri specialists in

Japan, applied a special technique
during the coating process, which
creates a unique texture that looks
like millions of lights sparkling in the
dark. Enjoy the URUSHI WALL by
getting creative and personalising it
such as decorating it with a flower
or a mini bonsai.

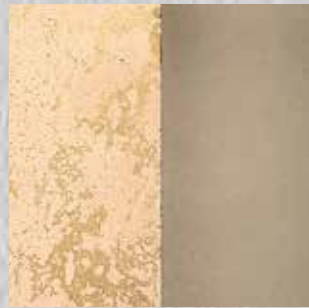


URUSHI WALL

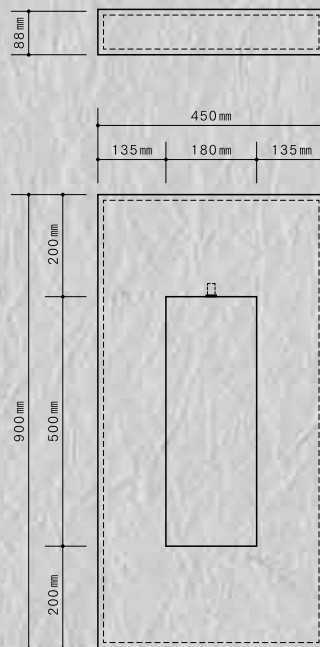
MIYABI

雅

The elegance of tradition in gold leaf and innovative modern urushi-nuri reflect the sense of Japanese beauty.



URUSHI WALL “Miyabi” gives the appearance of gold leaf washi - a traditional Japanese paper that is used for fusuma (Japanese sliding doors) in temples, etc. Its elegant stature is attractive and heart-warming, a similar feeling to when people see ikebana (Japanese art of flower arrangement) or kakejiku (hanging scrolls of calligraphy or paintings) displayed in a peaceful chashitsu (traditional Japanese room for tea ceremony). The irregular patterns of the beautiful design are one of a kind and is produced by trained urushi-nuri craftsmen with their special techniques. We hope you find a one-of-a-kind item made just for you.



JPY495,000 (reference price including tax)

URUSHI WALL

HISUI

翡翠

The dark green subtly shines like an ore that lives deep down in the Earth.



JPY 319,000 (reference price including tax)

URUSHI WALL

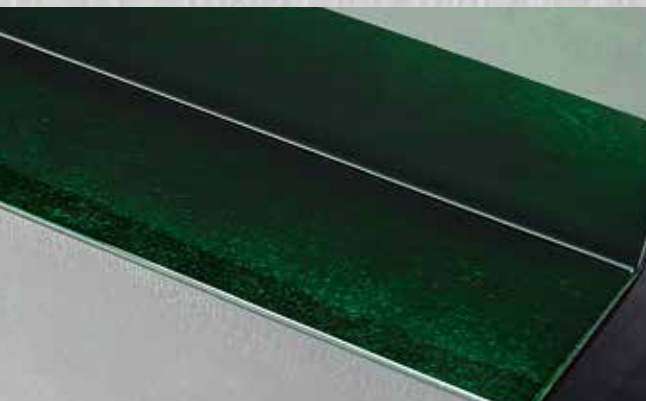
WABI

侘

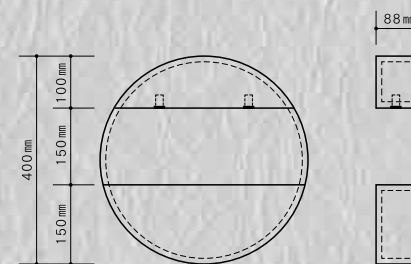
The stylish grey can turn any room such as washitsu (Japanese-style traditional room) and a modern living room into a luxurious hotel atmosphere.



JPY 286,000 (reference price including tax)



URUSHI WALL's "HISUI" and "WABI" are designed to naturally fit into daily life. This round design would be photogenic in a modern space and perfectly suited to decorate a small vase and work of art. When the light is turned on, the deep glowing colour of natural urushi (lacquer) shows its distinctive, sophisticated, and polished colour.



URUSHI WALL

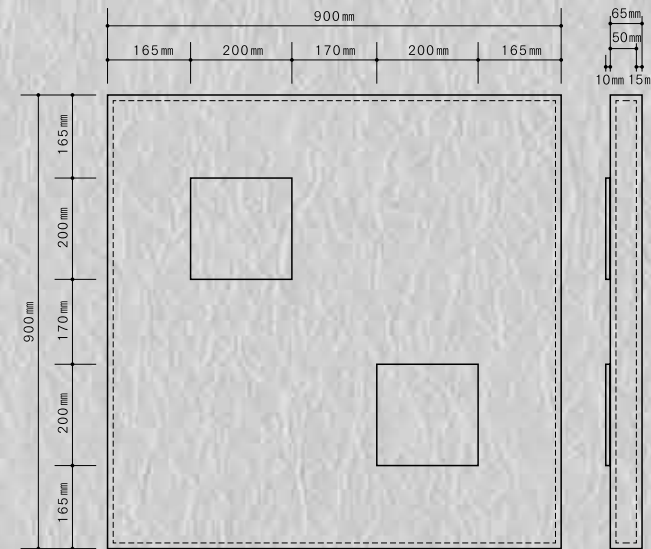


The creative art board made from natural urushi brightens up your room. Enjoy omotenashi (Japanese hospitality) with the beauty of seasonal flowers.

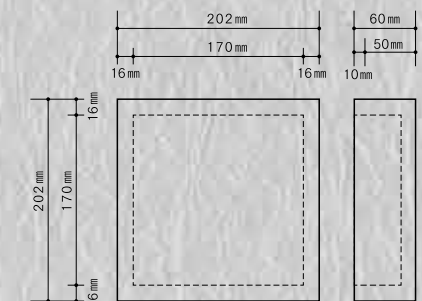


JPY 440,000 (reference price including tax)

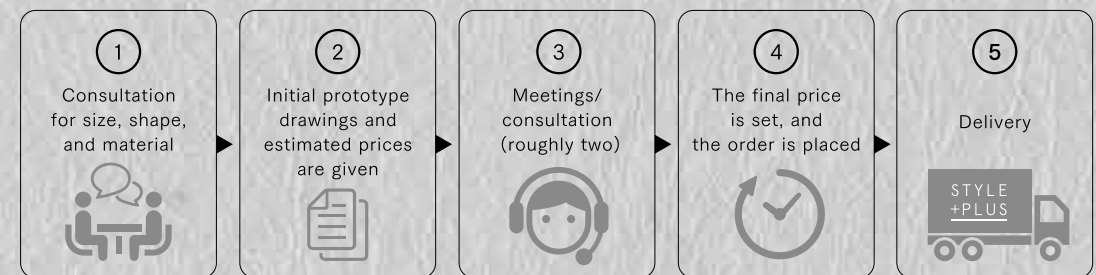
※ Flower arrangements are not included in the price.



This is for artificial/preserved flower use only. (Not fresh flowers). Flower arrangements require a separate order or purchase from another store.



Production Schedule



How to handle the products/Precautions for use

- Wall needs to be reinforced to hang the URUSHI WALL.
- Electrical construction is needed if you want to use the lights.
- Rough handling of the products may cause urushi-nuri to come off.
- Avoid leaving any wet stains on the product for an extended period of time. Gently wipe any wet excess with a soft fabric.
- Avoid leaving the product in direct sunlight, even when indoors.
- Gently wipe the product with a soft fabric to avoid being covered by dust.
- Colour may change over time as natural urushi is being used.
- Takes roughly 3 months to be delivered.
- Personalised designs will try to meet the customer's expectation as much as possible through consultation.